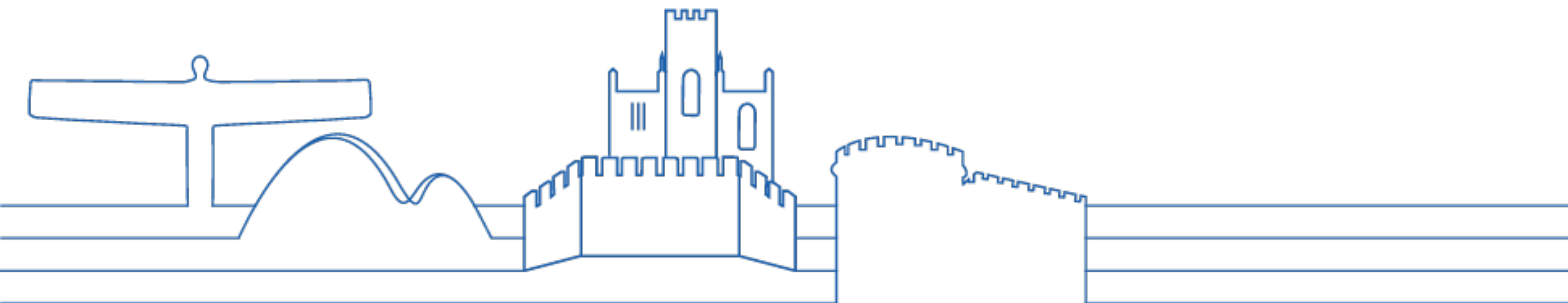




**North East and  
North Cumbria**

# Primary Care Networks

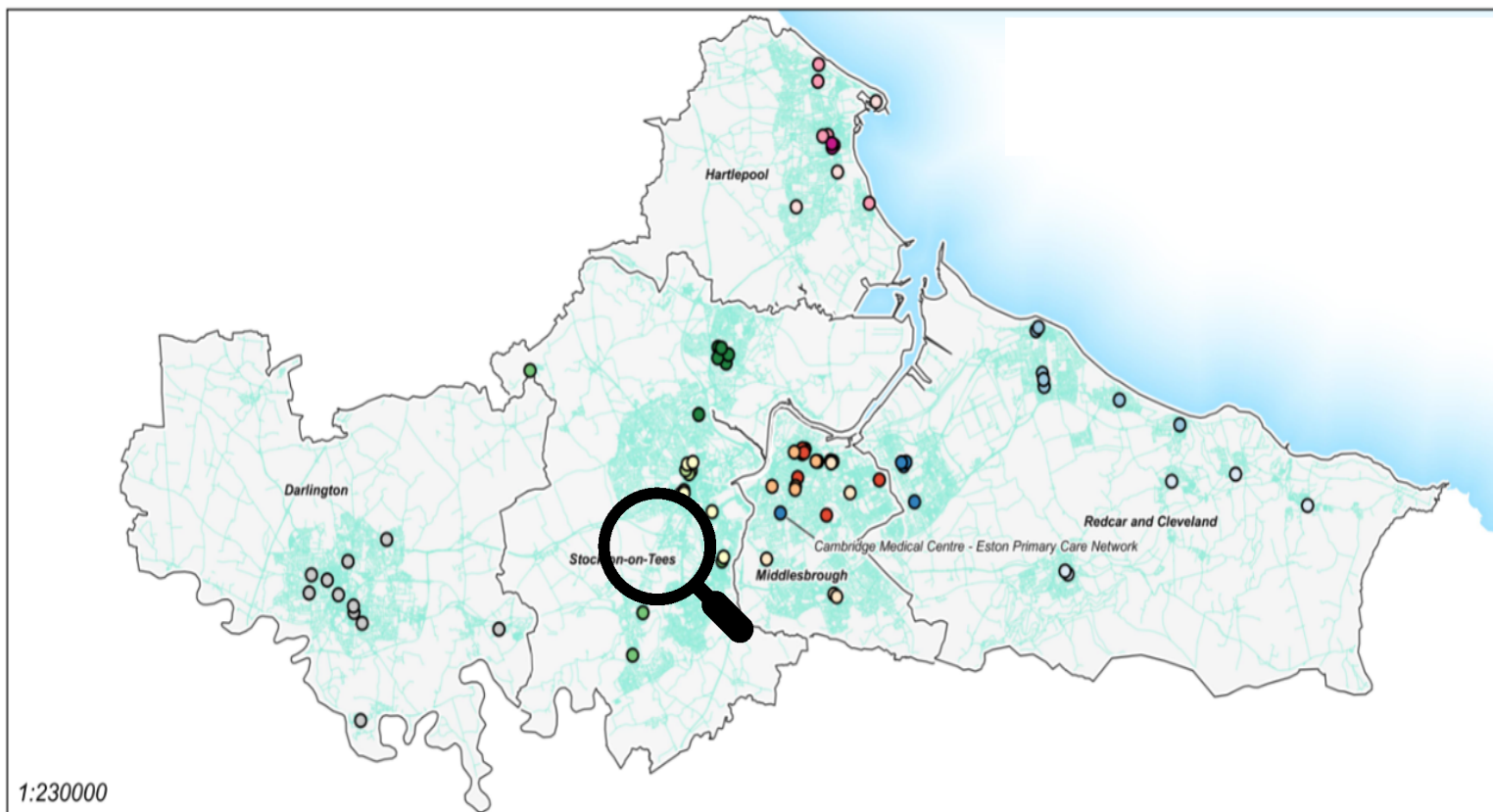
Contractual update and key progress



# Overview- Primary Care Networks



North East and North Cumbria



Darlington	Hartlepool	Redcar & Cleveland	Middlesbrough	Stockton
Darlington	One Life Hartlepool	Eston Primary Care Network	Central Middlesbrough	Stockton Primary Care Network
Hartlepool Health	The East Cleveland Group	Holgate Primary Care Network	Billingham and Norton Primary Care Network	Bytes
Hartlepool Network	Redcar Coastal	Greater Middlesbrough Primary Care Network	North Stockton Network	

## North Stockton- 45,017



Dr Barney Morgan

- Queens Park Medical Centre
- Tennant Street Medical Practice
- Alma Street Medical Practice

## Stockton- 53,562



Dr Ren Garg

- Woodlands Family Medical Centre
- Dovecot Surgery
- Densham Surgery
- Riverside Practice
- Arrival Medical Practice
- Elm Tree Surgery
- Woodbridge Medical Practice

## BYTES- 53,717



Dr Nick Steele

- Eaglescliffe Medical Practice
- Park Lane Surgery
- Thornaby & Barwick Medical Group
- Yarm Medical Practice

## Billingham & Norton- 51,767



Dr Ade Ashiru  
Dr Naseem Khan

- Norton Medical Centre
- Kingsway Medical Centre
- Marsh House Medical Centre
- Roseberry Practice
- Queenstree Practice
- Melrose Medical Centre
- Dr Rasool

# PCN contractual requirements

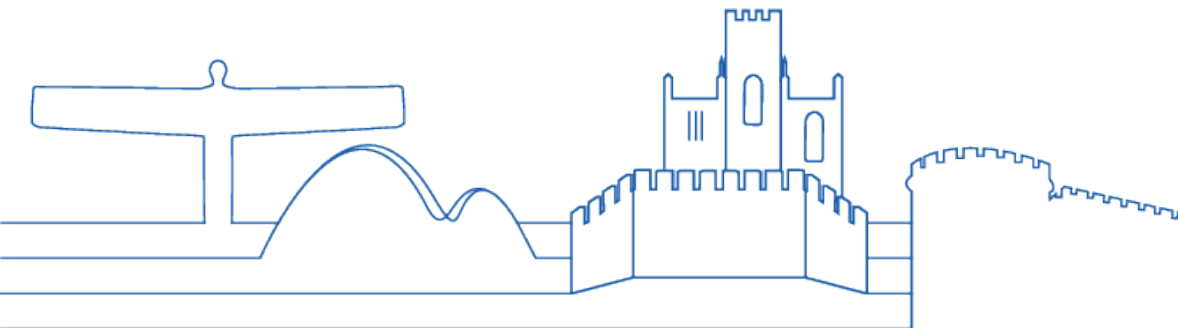
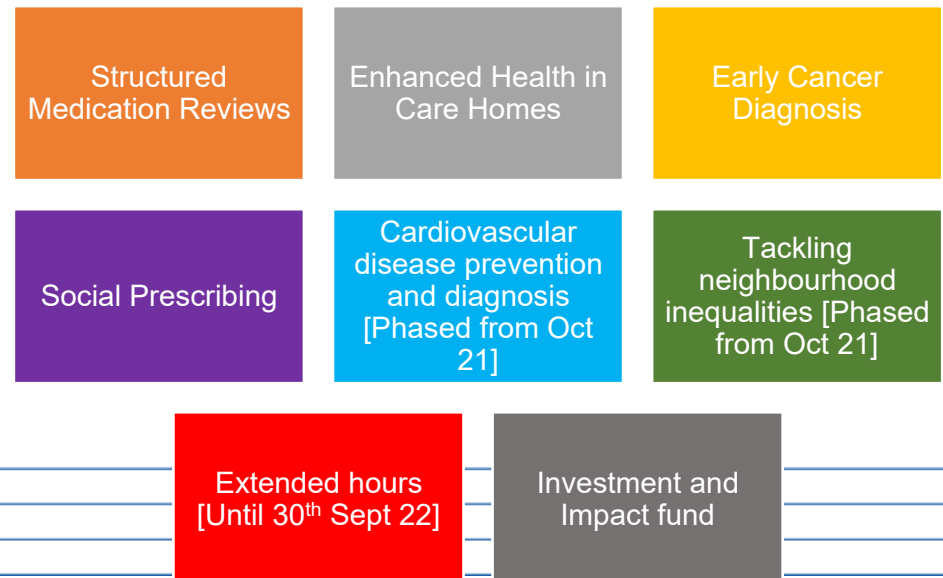


North East and  
North Cumbria

- PCNs have a number of 'core deliverables' set nationally through the GP contract
  - Some of these are existing requirements, implemented in previous contractual years, and some were newly introduced from 1 October 2021, on a phased approach
- Responding to current pressures in general practice, and recovery from COVID-19 several additional specifications expected of PCNs were delayed until April 2022
  - NHSE/I further advised on 1 March 2022 that there would be a limited expansion of the Cardiovascular Disease Prevention and Diagnosis service for PCNs during 2022/23, with the Anticipatory Care and Personalised Care services also to be introduced in a phased approach from April 2022

We are a group of like-minded practices, committed to working collaboratively with the aim of providing the best care to all our patients, while future proofing general practice in our area

**Dr Khan and Dr Ashiru (Clinical Directors) - Billingham and Norton PCN**

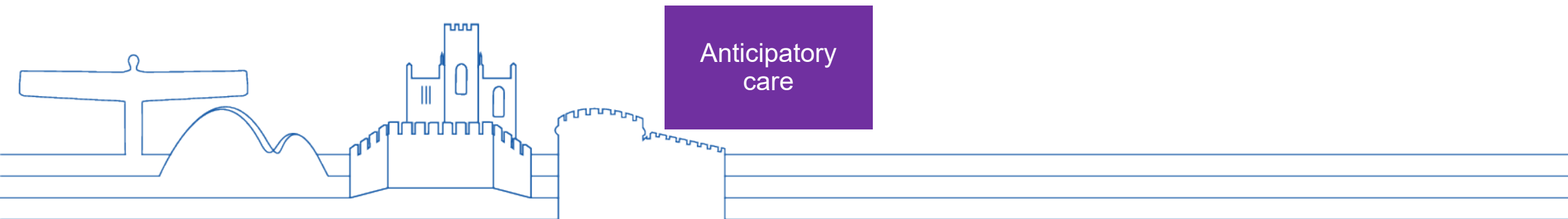


# PCN contractual requirements- new for 22/23

- The 2022/23 requirements began from 1st April 2022 and those deliverables that were paused due to the covid-19 pandemic will recommence, in line with NHS England's national directive
  - *These are in addition to those required in 21/22*



- PCNs also have to prepare in 22/23 for the following specification due in 23/24



# Spotlight on Enhanced Access

## Service requirements

- Access weeknights and Saturdays

## Planning timeline

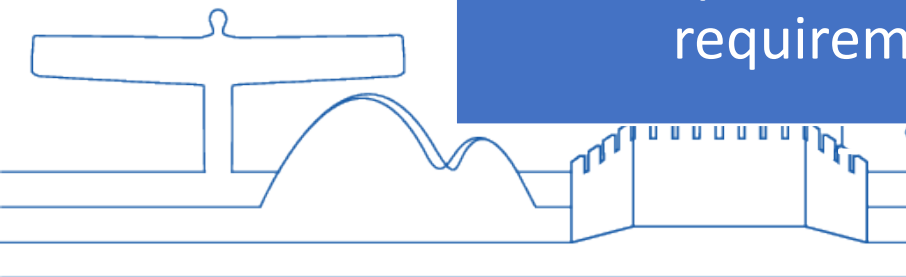
- Plans Jul/Aug
- Service commencement Oct 2022

## Support to PCNs

- Collaborative approach
- Interpretating national requirements

## Next steps

- Mobilisation
- Communication



# Enhanced Access- Stockton-on-Tees



North East and  
North Cumbria

Primary Care Network	Required hours [per week] [60m/1000 adj. pop]	Location[s]	Opening times	Provider
<b>Billingham and Norton</b>	53hr:45m	<ul style="list-style-type: none"> <li>Abbey Health Centre</li> <li>Norton Medical Centre</li> </ul>	<ul style="list-style-type: none"> <li>Mon- Fri- 18:30- 21:00 [Abbey Health Centre]</li> <li>Sat- 09:00-17:00 [Norton Medical Centre]</li> </ul>	Sub- contracting to GP Federation [H&SH]
<b>BYTES</b>	48hr:30m	<ul style="list-style-type: none"> <li>Woodbridge Practice, Ingleby Barwick</li> <li>Tennant Street, Stockton on Tees</li> </ul>	<ul style="list-style-type: none"> <li>Mon- Fri- 18:30- 21:00 [both sites]</li> <li>Sun- 09:00-13:00 [Tennant Street]</li> <li>Sun- 13:00-17:00 [Woodbridge]</li> </ul>	Sub- contracting to GP Federation [H&SH]
<b>North Stockton</b>	53hr:15m	<ul style="list-style-type: none"> <li>Woodbridge Practice, Ingleby Barwick</li> <li>Tennant Street, Stockton on Tees</li> </ul>	<ul style="list-style-type: none"> <li>Mon- Fri- 18:30- 21:00 [both sites]</li> <li>Sun- 09:00-13:00 [Tennant Street]</li> <li>Sun- 13:00-17:00 [Woodbridge]</li> </ul>	Sub- contracting to GP Federation [H&SH]
<b>Stockton</b>	59hr:45m	<ul style="list-style-type: none"> <li>Woodbridge Practice, Ingleby Barwick</li> <li>Tennant Street, Stockton on Tees</li> </ul>	<ul style="list-style-type: none"> <li>Mon- Fri- 18:30- 21:00 [both sites]</li> <li>Sun- 09:00-13:00 [Tennant Street]</li> <li>Sun- 13:00-17:00 [Woodbridge]</li> </ul>	Sub- contracting to GP Federation [H&SH]

# Workforce

- PCNs receive funding [Additional Role Reimbursement [ARRS]] to bring in a new workforce to support primary care to ensure a multi-disciplinary approach
- Staff funded through ARRS must be to support the DES requirements and in addition to current practice workforce
- PCNs have employed 178.39 WTE as at Sept 22 across Tees Valley [50.58 WTE Stockton on Tees]

The additional staff working in the PCN have used their skill set to provide high quality seamless integrated patient care through all practices, reducing health inequalities

**Ian Forest [Operational Lead],  
Stockton PCN**

Clinical Pharmacists

Dietitians

Pharmacy Technicians

Health and Wellbeing Coaches

Care Co-ordinators

Mental health practitioner [Adult  
or Children's- where system agrees]

Trainee Nurse Associate

Advanced practitioner\*

Social Prescribing Link Workers

Physician Associates

First Contact Physiotherapists

Podiatrists

Occupational Therapists

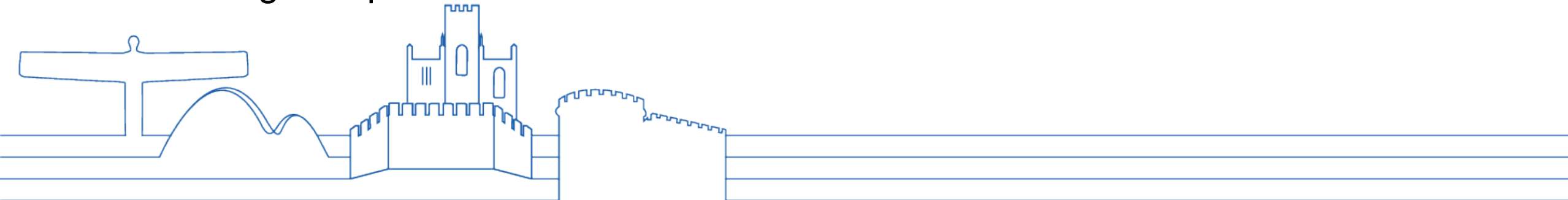
Paramedics

Nurse Associate

\* One Advanced Practitioner [band 8a equivalent] per PCN, in line with DES requirements

# Support to Primary Care Networks

- Important that the ICB team provide support to the developing PCNs this ranges from
  - Advice and Guidance on PCN business, liaising with system partners and regional/national colleagues
  - Developing a monthly update report
  - Providing information to support PCN practices i.e. list sizes, maps, and intelligence
  - Supporting and leading local forums ensuring connectivity to system partners
  - Updating and maintaining a PCN information portal
  - Support access to any non- recurrent PCN funding
  - Supporting reporting arrangements
  - Working with partners to reduce the demands on PCN Clinical Directors





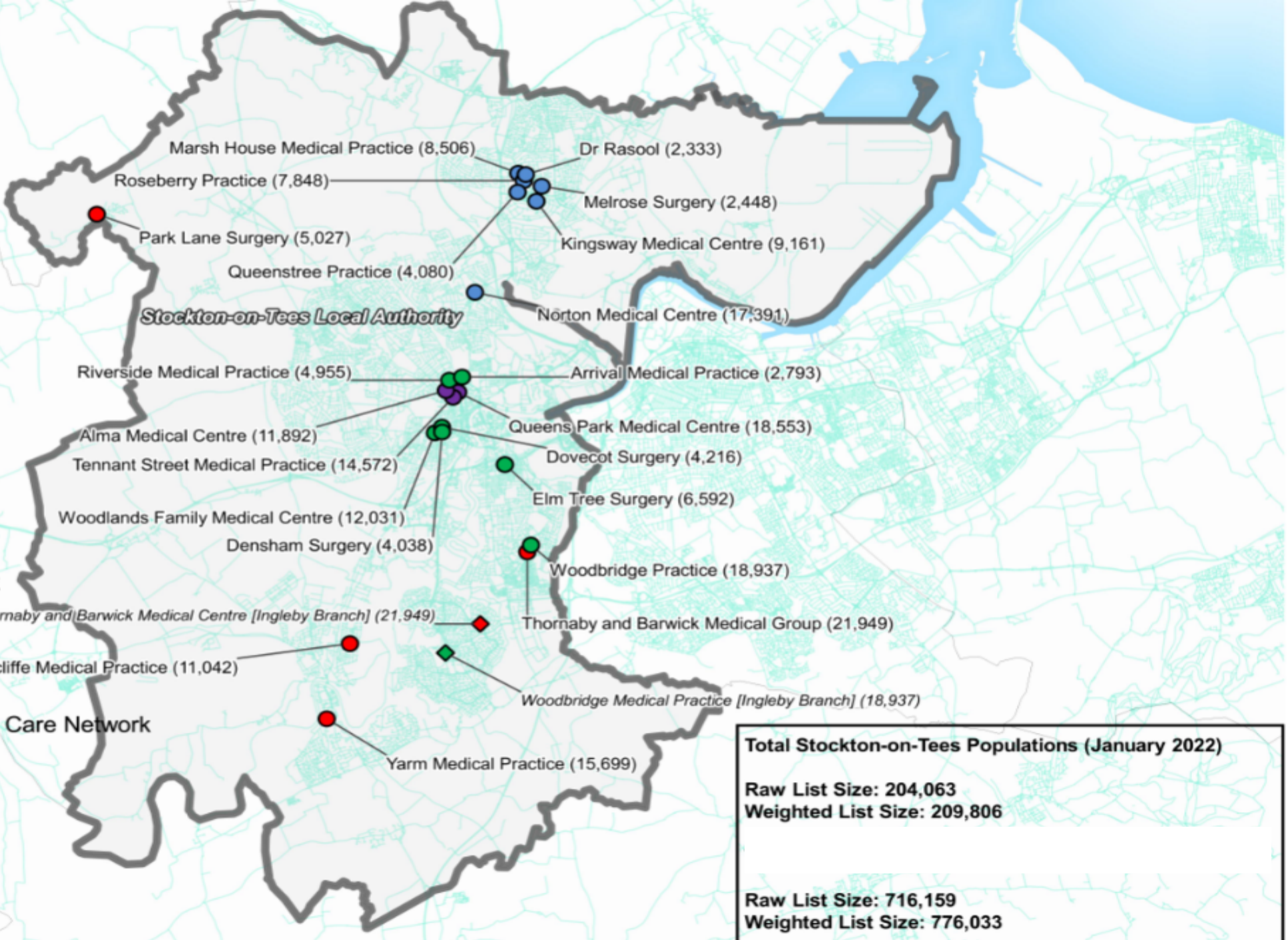
Data Sources:  
Population Sizes are published via NHS Digital and extracted from the NECS Data Warehouse.  
Local Authority boundaries via ONS. Contains National Statistics data © Crown copyright and database right 2019.  
Practice locations via Ordnance Survey. Contains Royal Mail data © Royal Mail copyright and Database right 2017, contains National Statistics data © Crown copyright and database right 2017.  
Roads via OpenStreetMap. Contains OpenStreetMap data © OpenStreetMap contributors.

### Primary Care Network

- Stockton Primary Care Network
- Bytes
- North Stockton Network
- Billingham and Norton Primary Care Network

- ### Site/Branch
- Site
  - Branch

1:115000



Total Stockton-on-Tees Populations (January 2022)	
Raw List Size:	204,063
Weighted List Size:	209,806
Raw List Size:	716,159
Weighted List Size:	776,033